

Alzheimer's disease: Impact on the workplace



Alzheimer's disease (AD) is not just a disease of old age. The early stages of AD affect many working Canadians, both as individuals living with the disease or as care partners for people living with AD. As the Canadian population ages, people will be working longer and are more likely to be affected by AD during their career.

What is Alzheimer's disease (AD)?¹

- Progressive brain disease that impairs thinking, memory and independence
- Most common cause of dementia, accounting for **60 to 80%** of all diagnoses
- Not a normal part of aging and requires proper medical assessment and care

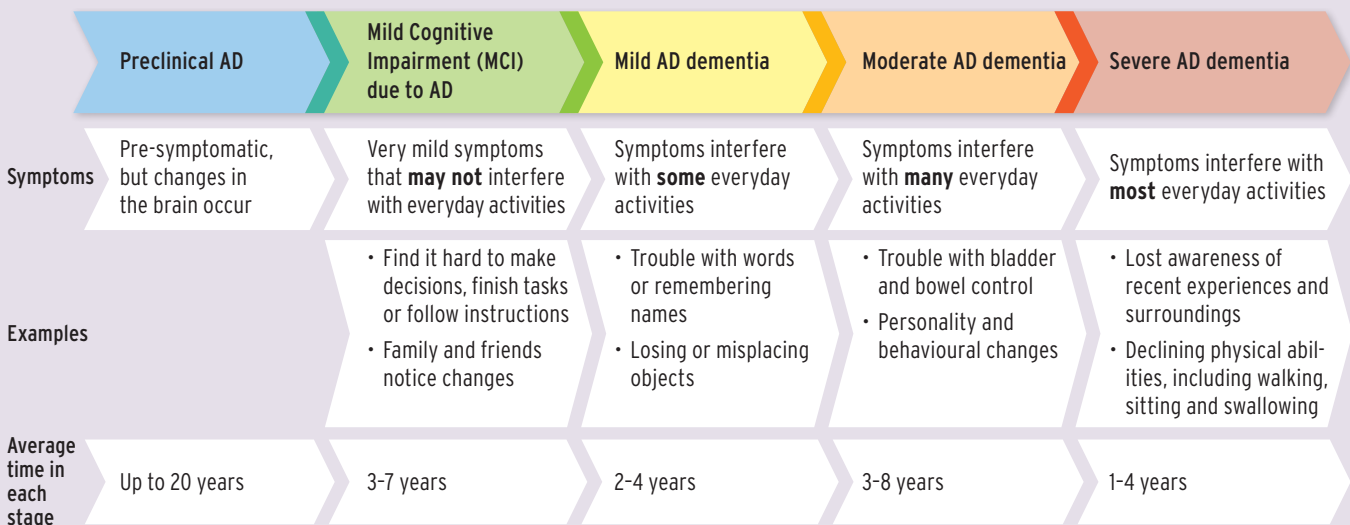
What is Mild Cognitive Impairment (MCI) due to AD?^{1,2}



1 in 5 people with MCI progress to mild AD within 1 to 2 years

1 in 3 people progress within 5 years

What are the stages of AD?^{3,4,5,6}



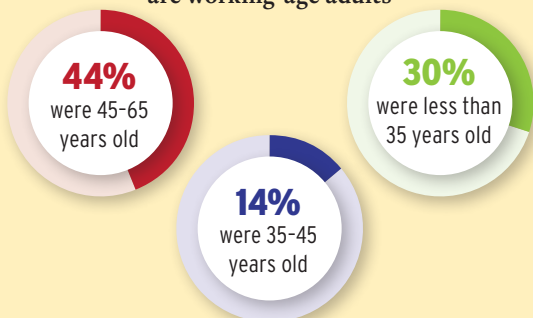
How does AD impact the workplace?

- Many people are still working when diagnosed with AD; they may have dependent children or major financial commitments
- About **5-6%** of AD diagnoses occur **before the age of 65**⁷

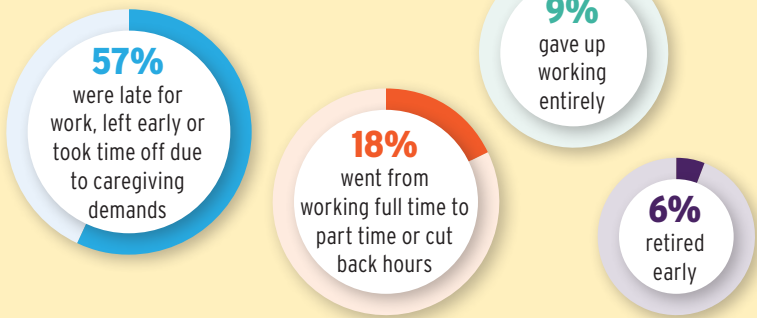
Caregivers in the workplace⁸

- There are **350,000** caregivers for people with dementia in Canada
 - This represents the equivalent of **235,000** full-time jobs
 - This number is projected to grow **188%** by 2050

Many caregivers of people living with dementia are working-age adults



Employed caregivers⁹



References

1 <https://alzheimer.ca/en/about-dementia/what-alzheimers-disease>
 2 Ward A, et al. *Dement Geriatr*. 2013;3(1): 320-332
 3 <https://www.alz.org/media/Documents/alzheimers-facts-and-figures.pdf>

4 El-Hyaeq YH, et al. *J Alzheimers Dis*. 2019;70(2):323-341
 5 <https://alzheimer.ca/sites/default/files/documents/Progression-Overview-Alzheimer-Society.pdf>
 6 <https://www.alz.org/alzheimers-dementia/stages>
 7 Kim J, et al. *Alzheimers Res Ther*. 2021;13:113

8 https://alzheimer.ca/sites/default/files/documents/Landmark-Study-Report-1-Path_Alzheimer-Society-Canada.pdf
 9 <https://www.alz.org/getmedia/dc0eda86-7ba5-4ade-96da-75187e26da84/alzheimers-impact-on-workplace.pdf>
 ILLUSTRATIONS: 123RF (ARCADY31, ELENABSL, HOBBITFOOT)

Sponsorship for this fact sheet was provided by Eisai Ltd. The statements expressed may not reflect the views of Eisai Ltd.

